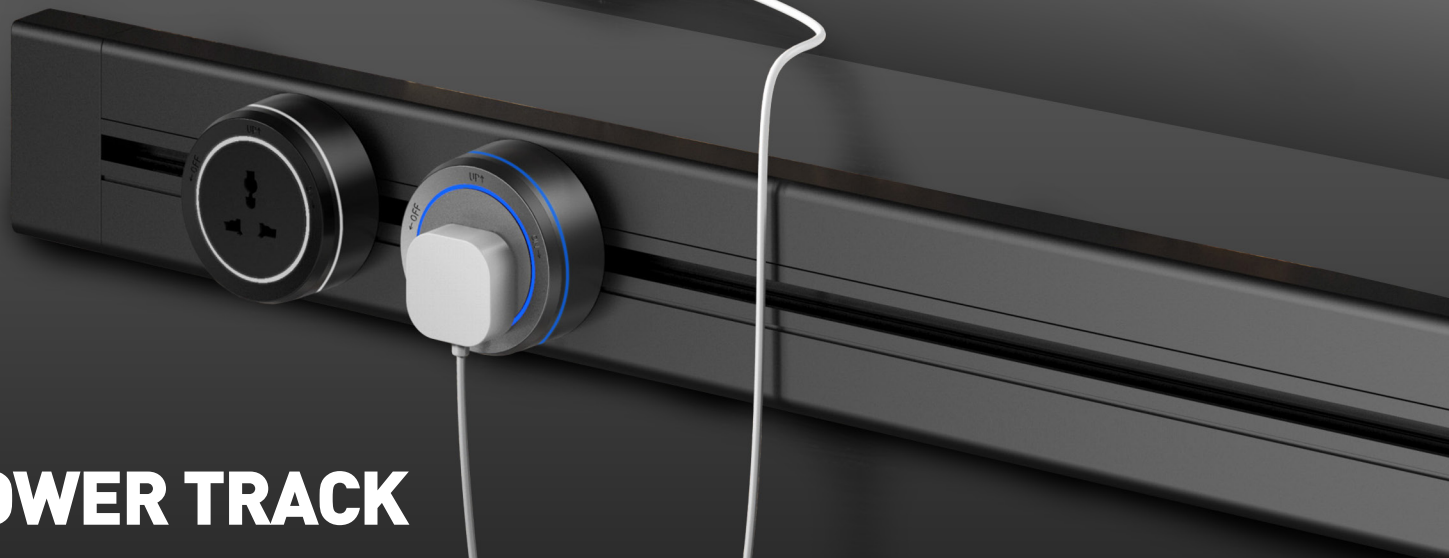
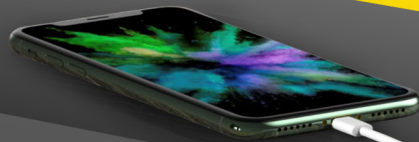




**SEAMLESS POWER
& CONNECTIVITY**

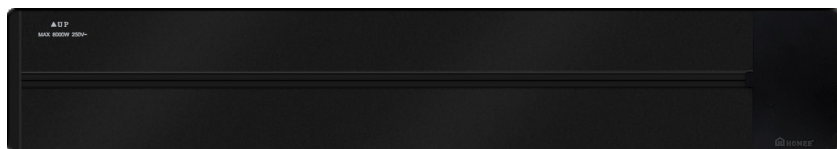


**POWER TRACK
& SOCKET**

The track is made of aluminum alloy

Aluminum alloy material is sturdy and durable
the surface is easy to clean

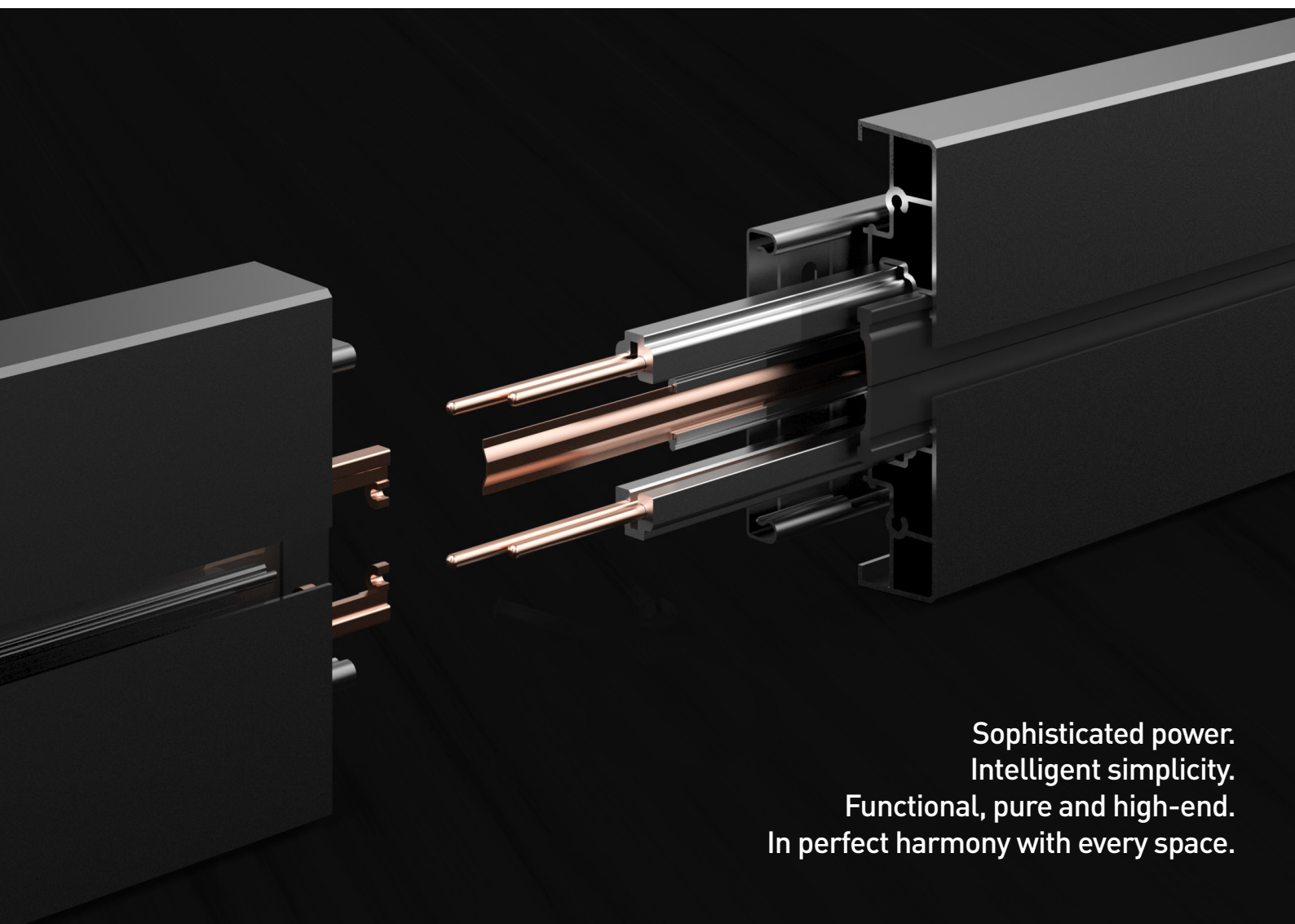
Two colours available:



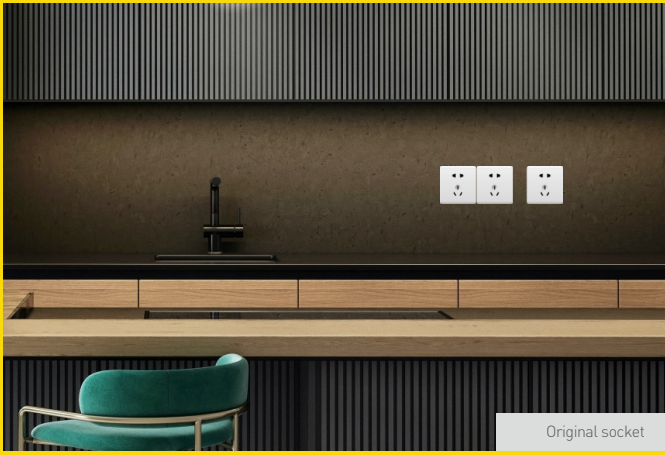
Meteorite Black



Deep Space Gray



Sophisticated power.
Intelligent simplicity.
Functional, pure and high-end.
In perfect harmony with every space.



POWER TRACK & SOCKET



Easy Installation



Safety Design



Max. Capacity: 8000W



Premium Quality

Socket colours : Grey / Black
 Socket LED colours : Blue / White



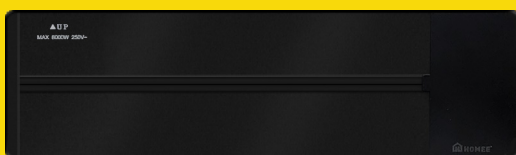
Universal Socket



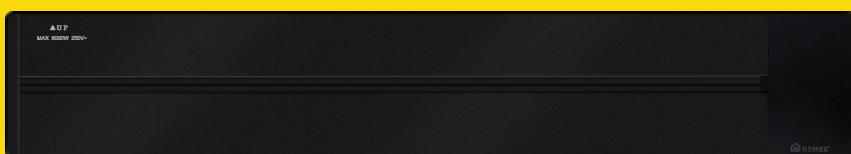
Type C & USB Socket

Track color	Meteorite black / Deep Space Gray
Installation mode	Surface Mounted / Concealed
Process material	Sandblasting Aluminium Alloy

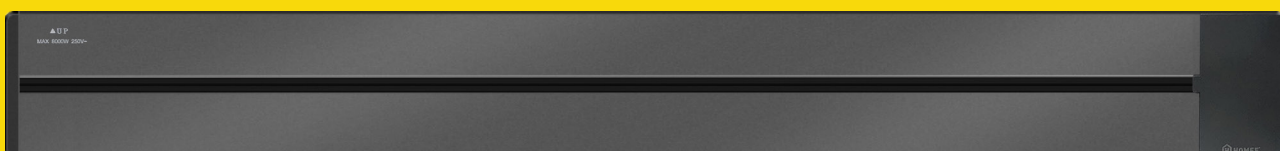
Length	300mm / 500mm / 750mm
Dimensions	Width 86mm, Thickness 18mm
Rated power	8000W
Rated voltage	100 - 250V ~
Rated current	32A



300mm

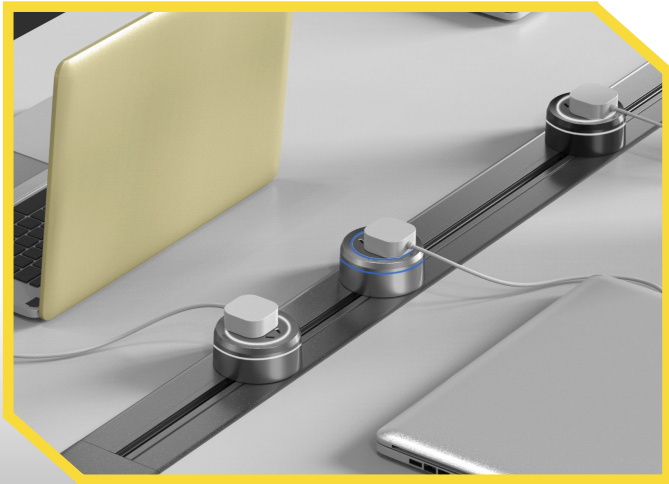


500mm

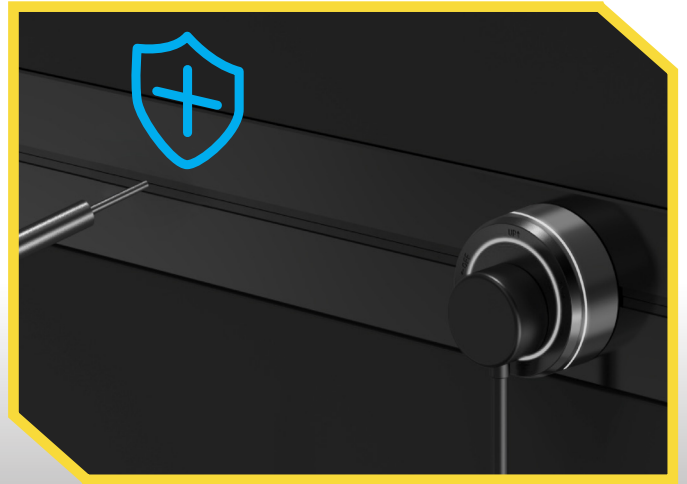


750mm

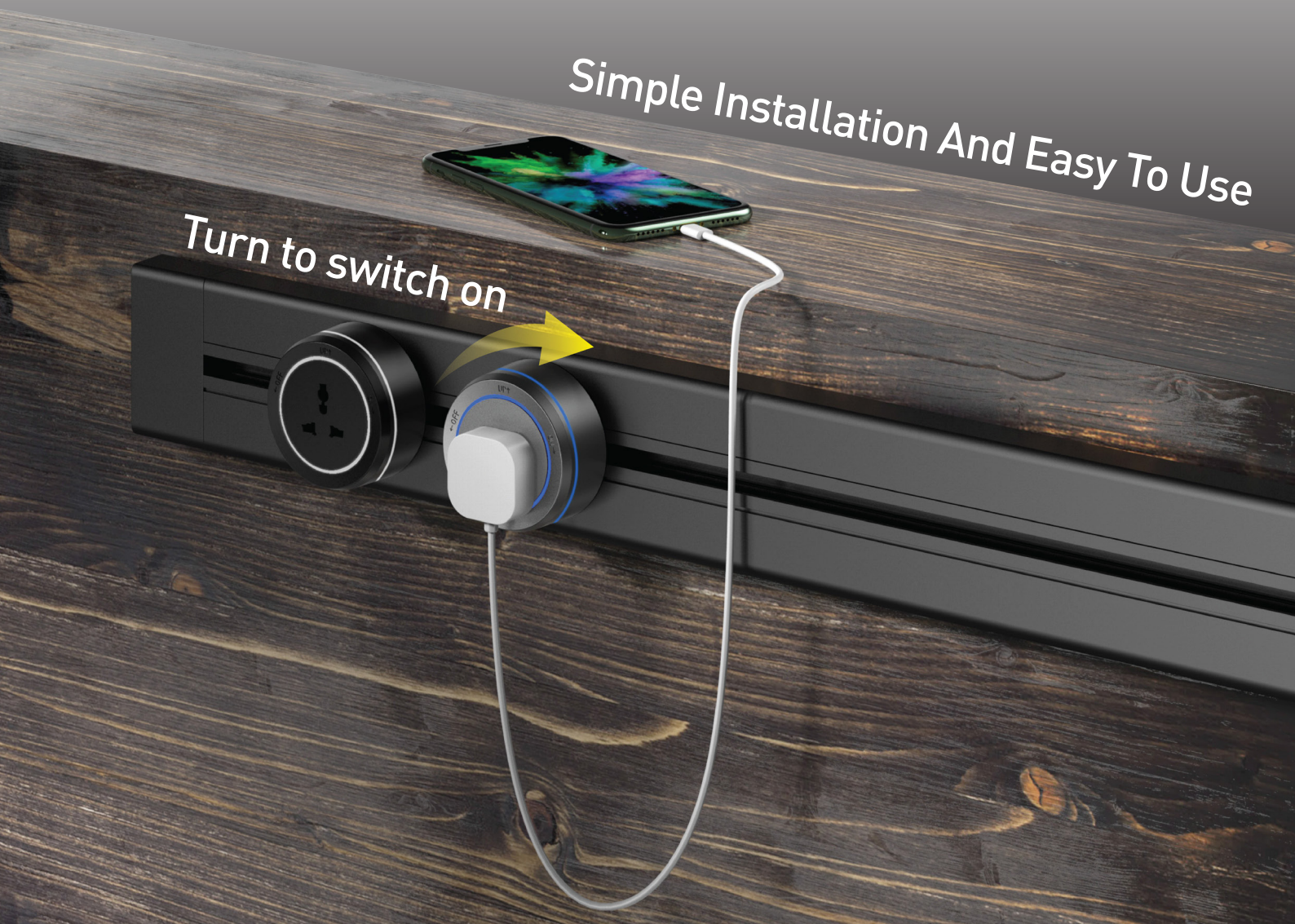
SEAMLESS POWER & CONNECTIVITY



Multiple Colours To Match
Every Style



Dust, Splash And Electric Shock
Prevention Rubber Belt



Turn to switch on

Simple Installation And Easy To Use

GUIDE FOR INSTALLATION OF POWER TRACK

Product parameters

Track voltage: 250V Track power: 8000w (bidirectional terminal)
 Frequency: 50Hz
 Safety level: IP20 Track current: 32A (bidirectional terminal)
 Executive standard: gb/T7251

Please read carefully before installation

Installer
 All power rails must be installed by qualified electricians. The use of earth leakage circuit breaker (ELCB) requires that all power devices must be connected to the earth leakage circuit breaker to provide protection against overload, short circuit and earth leakage faults. Failure to comply with this requirement may cause danger.

Installation position
 The installation position of all power tracks must comply with the corresponding national safety rules and regulations.

Mounting surface
 All power rails must be installed on a flat surface

Recommended installation clearance
 For more information on the minimum clearance required for tightening, adapters, and accessories (from the floor or any fixed furniture), refer to figures 1 and 2 on the right.

Minimum installation dimension

Figure 1 the minimum clearance from the bottom is 25mm

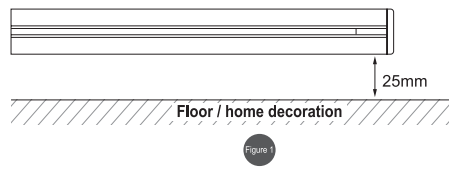
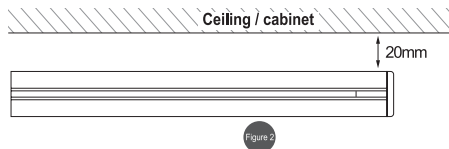


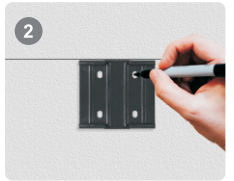
Figure 2 the minimum distance from the top is 20mm



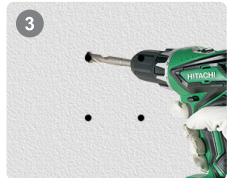
Track installation and positioning



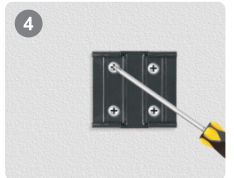
Identify the installation position and draw a parallel line according to the position (Ensure power track is positioned "↑UP")



According to the drawn line according to the upper edge make a fixed screw mark

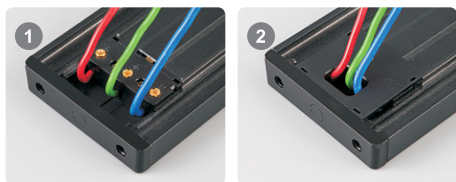


Punch the hole position of expansion screw according to the mark



Tighten the screws

Track outgoing mode I



Connect the corresponding terminal Wire outlet cover plate

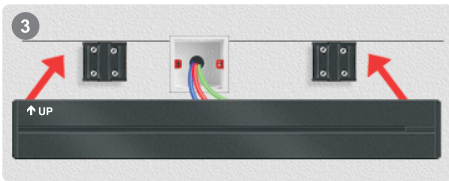


Connect the track with the reserved conductor, align it with the clip, and the installation is completed

Track outgoing mode II

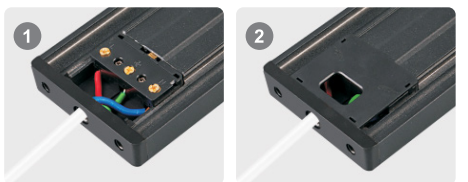


1. Connect the corresponding terminal and plug the wire along the track slot Cover the terminal cover

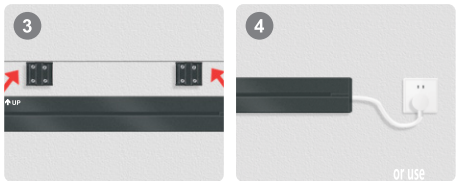


Connect the track with the reserved conductor, align it with the clip, and the installation is completed

Track outgoing mode III



1. Connect the corresponding terminal and plug the wire along the track slot Cover the terminal cover



Align the snap and install it

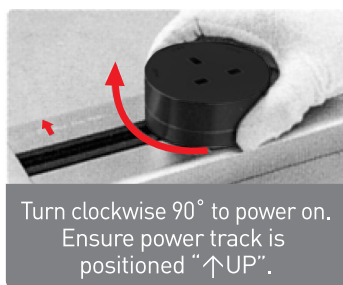
The open wire led out is directly plugged into the socket for power supply

USE & INSTALLATION GUIDE FOR TRACK SOCKET

Install track socket

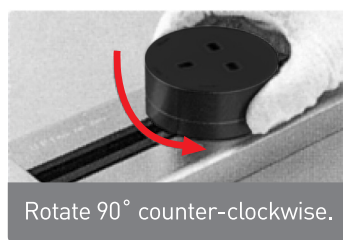


Position the track socket into the track slot and insert fully.



Turn clockwise 90° to power on. Ensure power track is positioned "↑UP".

Remove track socket



Rotate 90° counter-clockwise.



Remove the track socket completely.



SUPER HOMEER Malaysia Sdn. Bhd. 202301023946 [1517869-A]

Lot 12, Jalan Teknologi 3/1, Taman Sains Selangor 1, Seksyen 3, Kota Damansara, 47810 Petaling Jaya, Selangor.
Email : inquiries.homeer@gmail.com
Website : <https://superhomeer.com.my>

- Pictures shown is for illustration purpose only. Actual product colours may vary from catalogue.
- Info shown are correct at the time of printing and Super Homeer Malaysia Sdn Bhd reserves the right to change without prior notice.
- All products are available while stock lasts and first-come-first serve basis.
- While every care is taken in the publication, any inaccuracy is unintentional and regretted.